

**CREATE  
+ INNOVATE**

**ColossoVision**

**www.colossovision.ca  
1-855-869-5331**



[www.xvision-led.com](http://www.xvision-led.com)

# LED WALL SYSTEM

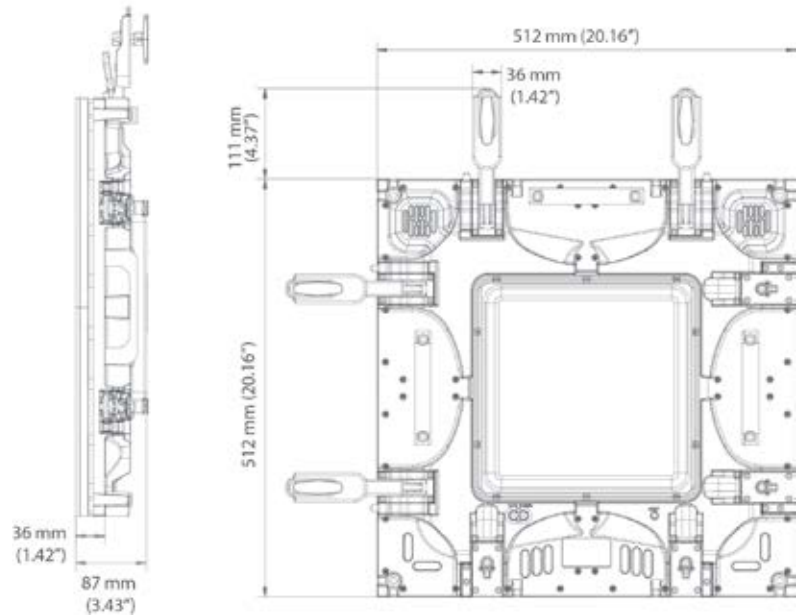


**xVision** from Theatrxxx has created a completely new standard for touring and commercial LED video display systems. The result of extensive customer feedback and many years of LED video experience, **xVision** raises the bar for the entire industry. Our market-leading features include high brightness, very fast and safety-certified rigging, smart power and data connections, easy field maintenance, an IP65 rating, powerful yet ultra-quiet cooling and fully interchangeable modules - regardless of pixel pitch.

With our renowned customer service and the strongest dealer and rental network in North America, **xVision** from Theatrxxx has quickly become the industry standard in high quality touring and commercial LED video systems. Please contact our experienced technical team for assistance with every step of your project – from drawings and system design or tour packaging right through to tour support, installation supervision and commissioning and operational/maintenance training.

# We make complex technology easy to use.

Our design team has extensive experience in professional video, lighting, electronics and live production. We know what it's like to be on the road or on the field, and we design products we'd like to use ourselves.



## DIP Technology available in 10.6 mm and 12.8 mm

Billboards and other outdoor displays often demand higher power, higher contrast LED solutions. For these applications Theatrixx recommends xVision DIP, a higher brightness technology using three discrete LEDs – one for each primary color – to deliver substantially more light output than conventional SMD panels. With a somewhat narrower viewing angle, xVision DIP is ideal for outdoor signage applications that compete with the sun - and where increased screen surface area means added revenue.

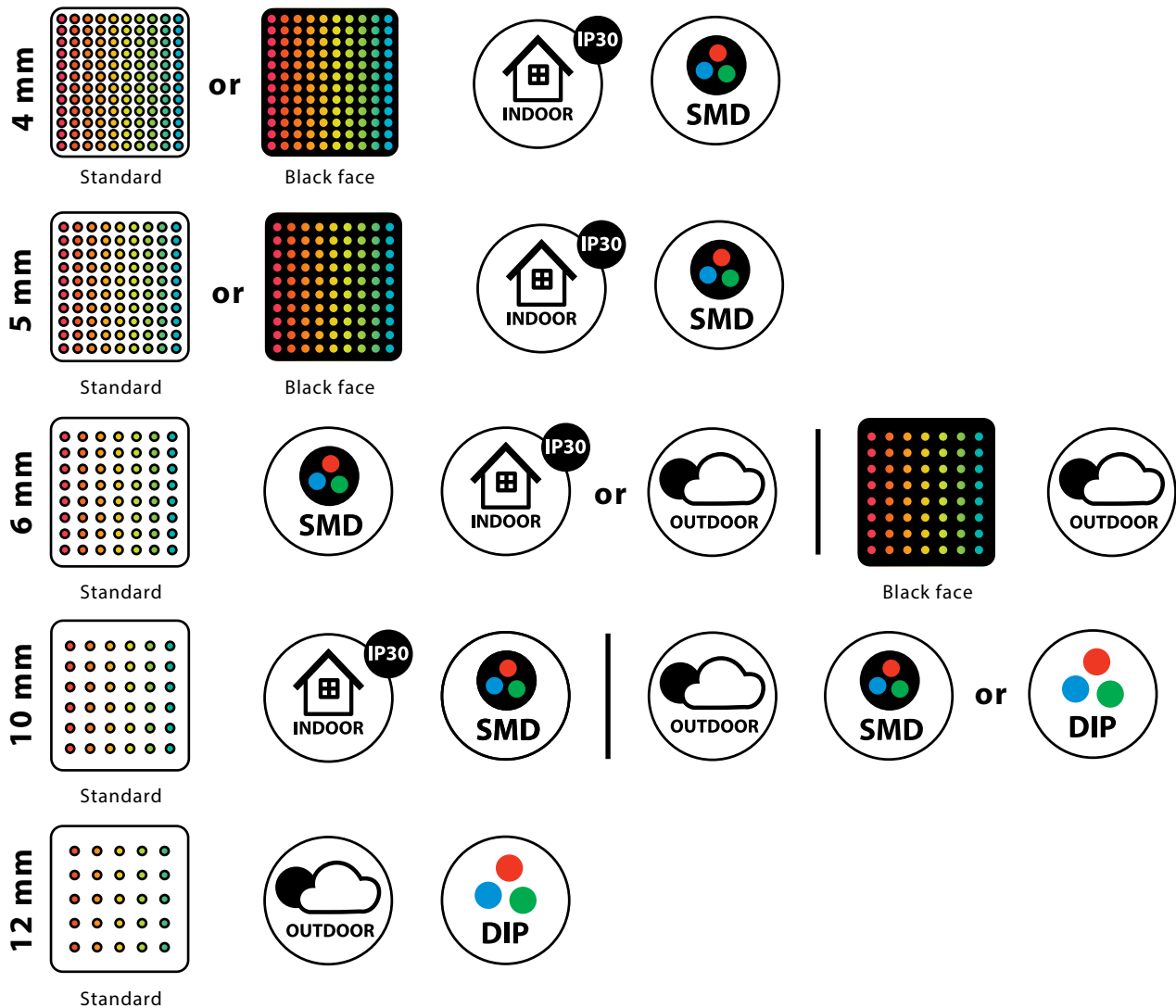






TOURING  
**VISION**

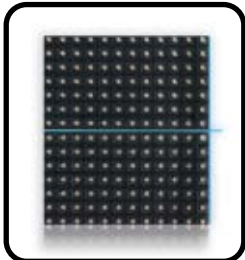
# CONFIGURATION OPTIONS





### **Amazing Video**

With real-time 16-bit processing and stringent LED quality control, xVision from Theatrixx renders both colours and video imagery more accurately than ever before. While most LED video panel systems rely on a complex array of scaling and compression devices, a lengthy signal chain that adds both latency and image distortion. The Theatrixx philosophy is different: We believe the straightest, shortest signal path is superior and, as a result, xVision boasts less than 5 milliseconds latency and a noticeably cleaner video image.



### **Seamless Display Surface**

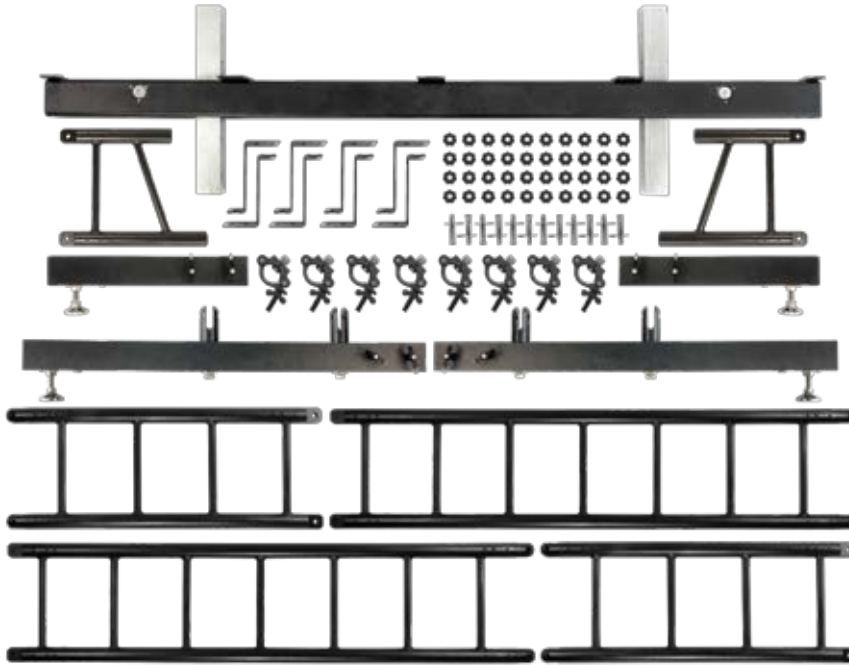
As LED video panel pixel-pitches become tighter and viewing distances get closer, a seamless display surface with no apparent cracks or joints is of the utmost importance. Each xVision panel is cast into an extremely rigid aluminium frame, producing a much smaller tolerance for gaps and deformations compared to products using extrusions and folded metal frames. The cast edges are then precisely ground to within a tenth of a millimetre of the required dimensions which, combined with a clever adjustment system, ensures your screen looks seamless from any angle - even after many years of heavy use.



### **Reliable Power and Data Link**

Setting new standards: That's what xVision is all about. It's the reason we replaced RJ45 and HDMI connectors – which were never designed for heavy industrial use – with our own proprietary XVT connector. Offering over 25 times the mating lifetime of an RJ45, our XVT offers better electrical and mechanical connectivity, an IP65 rating, positive locking and no screws or aligning pins. And, because power and data connectors share the same parts, the XVT is much easier to quickly service in the field.

# GROUND SUPPORT STAND



## Ground Support Full kit includes:

---

1 Main base

---

2 Front Legs

---

2 Back Legs

---

2 x 475mm Ladders

---

2 x 1032mm Ladders

---

2 x 1794mm Ladders

---

8 Mega-Couplers

---

12 Truss lock pins

---

40 Thumbscrews

---

With low ballrooms ceilings and on-stage applications it is not always possible or desirable to suspend your xVision LED screen from a truss. That's why Theatrixx has designed a self-supporting structure for screens from 4 to 7 panels (up to 12' or 3.6m) high. Built-in level indicators and adjustable feet make our Ground Support Stand easy to set up on any surface – with perfect alignment guaranteed by using a single 4" strong bottom aluminium beam. The integrated ladder system brings the highest panels within reach without the need for scaffolding or personnel lift.

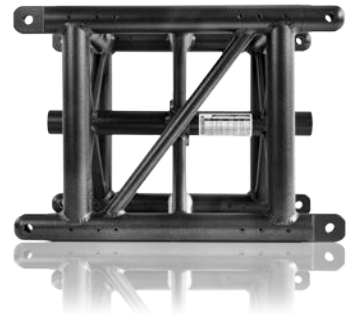




# XVISION CHANNEL TRUSS

One of the keys to building a seamless LED screen is the way it's supported. The ideal screen support structure has a low deflection rate, assembles quickly and ensures a safe installation. Our custom-designed box truss does all three – incorporating innovative timesaving features that make it the perfect companion to any touring LED video package.

1 PANEL WIDE



2 PANELS WIDE



4 PANELS WIDE





# RIGGING



## Rigging: safety first

Safety must be the primary design criteria for any device or system that will be rigged or flown. Engineers evaluate the strength and reliability of a design by calculating its Safety Factor Rating - which is the number of times the device or system can support its own weight before any part begins to lose structural integrity. As an example, if a system is designed and manufactured to support 1000lbs but is only supporting 500lbs it is said to have a 2:1 Safety Factor Rating. If that system is only supporting 100lbs it is said to have a 10:1 Safety Factor Rating with a total of 15 panels high.



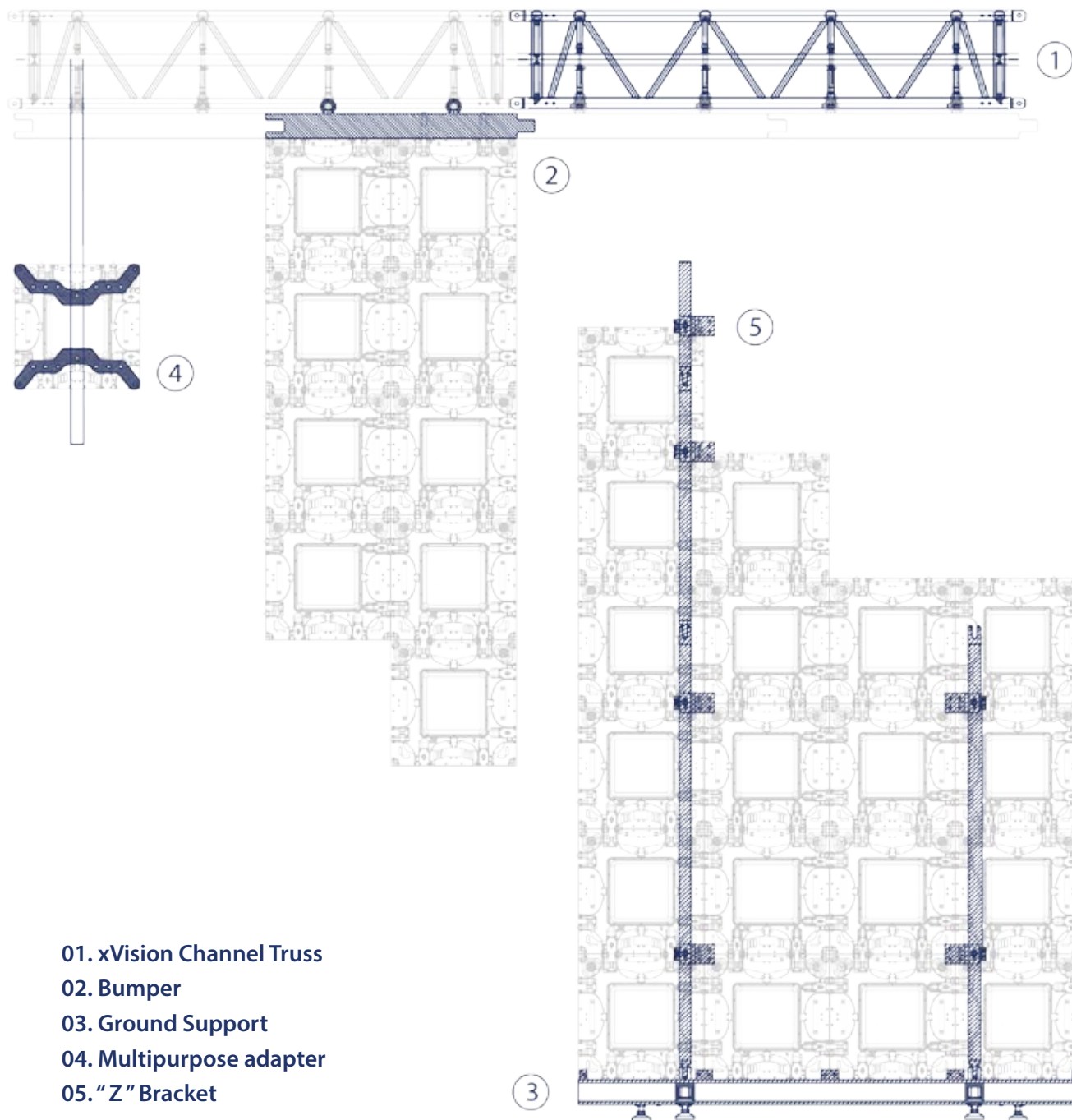
## Bumpers

Using only the highest quality machined alloy, **xVision** bumpers support even the heaviest and tallest screens while maintaining our above-average 10:1 safety factor. With sizes from single-wide to six-wide, virtually any rigging configuration can be achieved efficiently.



## Multipurpose adapter

The multipurpose adapter allows you to mount a single, or a group of panels to standard 2 inch pipe, 12X12 or 16X16 truss in many different configurations using two standard Cheesborough-type couplers. Creative setups and complex looks can easily be achieved using multiple of these brackets. Made of sturdy 1/4 inch aluminium, it comes with built-in captive thumbscrews for a tool-less installation and is painted in a charcoal, scratch resistant textured finish.



# CONTROL

## Processors

At the core of every **xVision** system from Theatrixx is a System Processor, responsible for encoding your digital DVI video feed into our proprietary serial data protocol. The System Processor remotely controls and monitors the **xVision** panels and its two outputs provide either active or passive redundancy. For large, complex LED video displays, frame-accurate synchronisation across processors is possible without any noticeable delay or lag.

**XVC-D12N**



For permanent installations or smaller mobile systems, the cost-effective D12N uses the same powerful and easy-to-use control software, with no front-panel controls to prevent accidental changes by inexperienced users. The D12N also features an ambient light sensor port to allow for automatic brightness adjustment during different lighting conditions. This reduces operating costs and increases life expectancy while also minimizing over-brightness blurring at night.

**XVC-D24N**



Our flagship processor, the D24N, is particularly suited for temporary setups and touring systems. With an on-board graphic LCD interface, it allows quick screen configuration and basic colour adjustments without the need for a control computer. Featuring DVI input and thru with four XVT9 data outputs, it is equipped to handle the biggest configurations at full 1920X1080 resolutions. For even larger setups, cascading ports allow multiple processors to be linked together using a simple Ethernet cable.





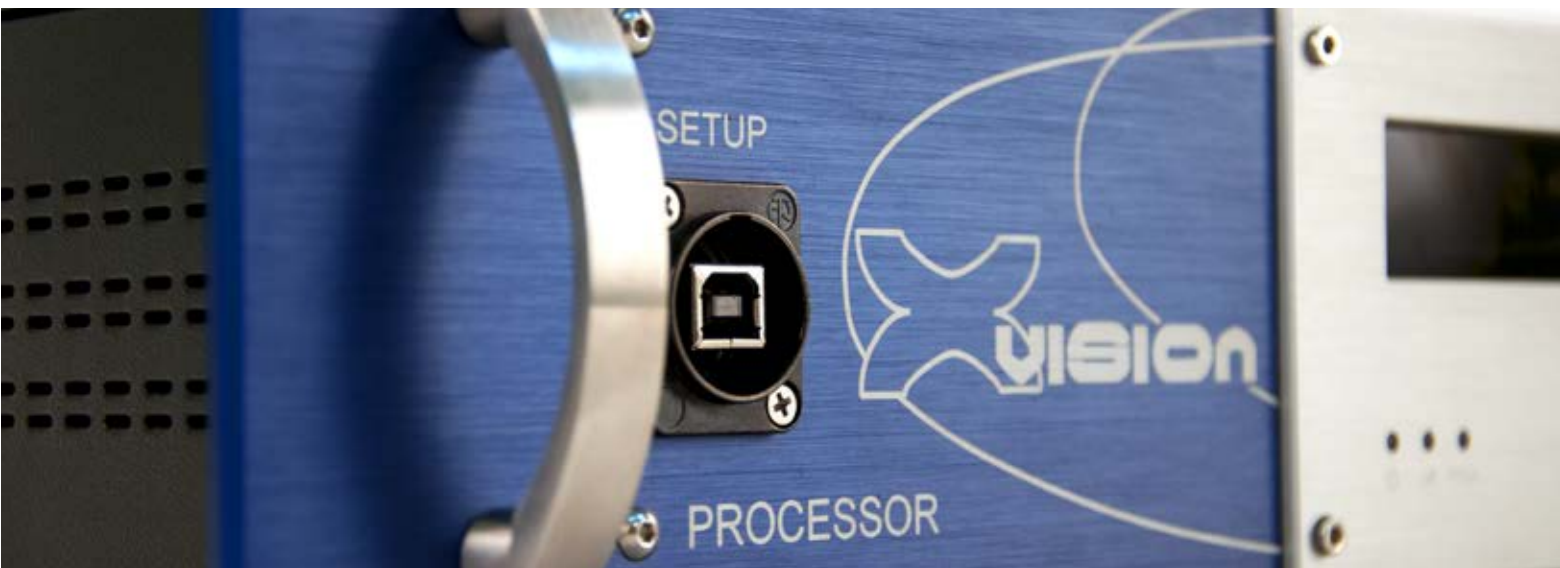
## LCD Rack Monitors

Our LCD Rack Monitors offer a choice of three 5,3in or two 8,4in high resolution monitors with individual DVI inputs and loop-through outputs, along with composite and optional HDSDI input and loop. A USB port allows for connection to thumb drives for previewing media content directly on the monitors using the built-in file browser. Embedded audio in SDI feeds is decoded onboard the units and can easily be monitored using the 1/8 headphone jacks and onboard speakers present on the front panel. The entire module can be tilted to allow for a better viewing angle and is built in the same high quality materials as all the other xVision Control products.

Dual Rack Mount Monitor



Triple Rack Mount Monitor



# ACCESSORIES



XVT9 FEMALE TO RJ45



XVT9 FEMALE TO FEMALE

## xVision Couplers & Adaptors

Complex or creative setups often require non-standard cabling and the ability to use off-the-shelf equipment. Our custom-designed line of adapters is specifically made for those situations where Neutrik connectors must be used to carry **xVision** power or data, or when a junction between two XVT cables is required.

### Models Available :

- + Data coupler XVT9 Female to Female
- + Power coupler XVT3 Male to Female
- + Data adapter XVT9 Female to RJ45
- + Power adapter XVT3 Male to Powercon (grey)
- + Power adapter XVT3 Female to Powercon (blue)



XVT3 MALE TO POWERCON (GREY)



XVT3 FEMALE TO POWERCON (BLUE)

# ACCESSORIES

## Road Cases

Packaging your xVision screen correctly for transport is vital to its longevity. That's why we have used our long-standing relationships with renowned cases manufacturers to bring you sturdy, durable and practical road cases for every component in the system. From turnkey, prewired processing and electrical distribution racks to rigging and large panel array cases, our design team and manufacturing partners offer you an extensive selection of road ready solutions. Contact our sales team for details.

### Sizes Available:

- + 2 Tile Spaces
- + 6 Tile Spaces
- + 10 Tile Spaces



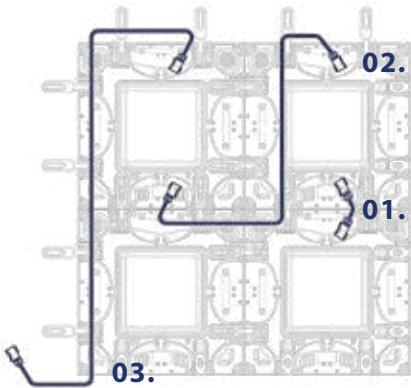
## Cables

Fact: Most LED video panel installation problems are caused by signal cable failures. Which is why we have developed a new integrated signal and power connector with a quick-lock, an IP-65 rating and over 25 times the rated mating cycle of an Ethercon connector for improved reliability under any conditions.

\*All lenght available upon request



Cable Chart



POWER CABLES

XVT3 Connectors Male to Female  
12 AWG/3 Conductors SJOOW Cable  
Length: 22cm (~ 9")  
**Power link from top to bottom tile**



01.

XVT3 Connectors Male to Female  
12 AWG/3 Conductors SJOOW Cable  
Length: 90cm (~ 35")  
**Power link for strip 1 tile high**



02.

XVT3 Connectors Male to Female  
12 AWG/3 Conductors SJOOW Cable  
Length: 141cm (~ ")  
**Power link for strip 2 tiles high**



03.

DATA CABLES



04.

XVT9 Connectors Male to Male  
CAT6 Double Jacket Cable  
Length: 22cm (~ 9")  
**Data link from left to right tile**



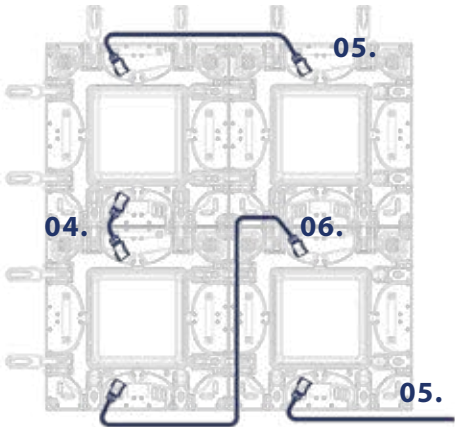
05.

XVT9 Connectors Male to Male  
CAT6 Double Jacket Cable  
Length: 65cm (~ 26")  
**Data link from left to right tile**



06.

XVT9 Connectors Male to Male  
CAT6 Double Jacket Cable  
Length: 90cm (~ 35")  
**Data link for strip 1 tile high**



Technical Specifications		4 MM INDOORS	5 MM INDOORS	6 MM INDOORS	6 MM OUTDOORS	10 MM INDOORS	10 MM OUTDOORS	10 MM DIP INDOORS	12 MM DIP OUTDOORS
OPTICS	Pixel Configuration	SMD 3-IN-1						DISCRETE RGB	
	Pixel Pitch	4 MM	5.33 MM	6.4 MM		10.66 MM			12.8 MM
	Panel Resolution	128 X 128 PX.	96 X 96 PX.	80 X 80 PX.		48 X 48 PX.			40 X 40 PX.
	Brightness	1600 NITS	1800 NITS	2000 NITS	5500 NITS	2000 NITS	5500 NITS	6500 NITS	
	Viewing angle	150° X 150°			150° X 135°	150° X 150°	150° X 135°	130° X 130°	
	Min. viewing distance	8 FT (2.4 M)	10 FT (3 M)	12 FT (3.8 M)		20 FT (6 M)		32 FT (10 M)	40 FT (12 M)
	Max. viewing distance	130-260 FT (40-80 M)	200-330 FT (60-100 M)	200-400 FT (60-120 M)		330-660 FT (100-200 M)			400-800 FT (120-240 M)
ELECTRONICS	Normal Refresh Rate	N/A				400 HZ	N/A	400 HZ	
	High Refresh Rate	1800 HZ		1650 HZ	1600 HZ	2000 HZ			
	Grayscale depth	16 BITS							
	Scan mode	1/8 SCAN				1/2 SCAN	1/8 SCAN	1/4 SCAN	
	Voltage	120-240 VAC, 50-60 HZ AUTO-SENSING							
	Power consumption	225 W MAX, 135 W AVG			300 W MAX, 195 W AVG	225 W MAX, 135 W AVG	300 W MAX, 195 W AVG	250 W MAX, 160 W AVG	
	Texte	TEXTE							
MECHANICAL	Rigging safety factor	1 : 10 WITH 15 PANELS HIGH							
	Dimensions	20" X 20" X 3.5" (512 MM X 512 MM X 85 MM)							
	Weight	28 LBS (12.7 KG)			28.5 LBS (12.9 KG)			32 KG (14.5 KG)	
	Cooling	ACTIVE (TWO FIXED OPTION REMOTE CONTROLLED ON/OFF FANS) - OUTDOOR MODELS WITH WATER INGRESS PROTECTION							
	Frame construction	ONE SOLID PIECE OF MACHINED DIE-CAST ALUMINUM WITH HEAT DISSPATION CAPABILITIES							
CONTROLLER	Protection rating	IP30			IP65/IP54	IP30	IP65 (FRONT)/IP54 (BACK)		
	Processor input	DVI-D							
	Mapping process	VIA PC-BASED SOFTWARE OVER USB LINK							
	Input resolutions	800 X 600, 1024 X 768, 1280 X 1024, 1920 X 1200, 2048 X 1152, 720P, 1080P							
CONNECTIONS	Output resolutions	500K PIXELS PER OUPUT, 2M PIXELS PER PROCESSOR							
	Type	SEPARATE QUICK-LOCK IP65 MULTIPINS FOR POWER AND DATA							
	Mating lifetime	OVER 25 TIMES BETTER THAN RJ45							
	Power	3-PIN 12/3 AWG, 20A RATED							
	Data	9-PIN, IP-65 WITH CAT6 CABLE							